



## **ANOGEN - A Division of YES Biotech Laboratories Ltd.**

2355 Derry Road East, Unit 23, Mississauga, ON L5S 1V6 • Tel: (905) 677-9221 • Fax: (905) 677-0023

### **Mouse anti- beta amyloid peptide 42 [CA9 10C11] Datasheet**

<b>Catalogue No</b>	MO-M40093B
<b>Product name</b>	Mouse anti-beta amyloid peptide 42 [CA9 10C11]
<b>Clone No</b>	CA9 10C11
<b>Product type</b>	Primary antibodies
<b>Description</b>	Mouse monoclonal antibody (MAb) to C-terminal of beta amyloid peptide 42, Protein G affinity purified
<b>Target protein</b>	C-terminal of beta amyloid peptide 42
<b>Immunogen</b>	KLH conjugated to a short peptide (MVGGVVIA) corresponding to the C-terminal sequence of beta amyloid peptide 42
<b>Specificity</b>	<p>This antibody specifically recognizes the C-terminal sequence of beta amyloid peptide 42 and full length beta amyloid peptide 42.</p> <p>The antibody does not cross react with beta amyloid peptide 40 in dot blotting and ELISA. Cross-reactivity to beta amyloid peptide 43 is less than 1% in ELISA.</p>
<b>Reactivity</b>	Human and other primates, mouse, rat
<b>Clonality</b>	Monoclonal
<b>Source</b>	Mouse
<b>Isotype</b>	IgG2b, k
<b>Formulation</b>	Lyophilized from a solution in 0.01M PBS pH7.2
<b>Reconstitution</b>	Double distilled water is recommended and to adjust the final concentration to 1.00 mg/ml
<b>Applications</b>	ELISA, Immuno-blotting
<b>Research</b>	Aging and neurodegenerative diseases.
<b>Storage</b>	Store at -20° C
<b>References</b>	If research is published using this product, please inform Anogen in order to cite the reference on this datasheet. Anogen will provide any product of choice as gratitude.

**This product is for LABORATORY RESEARCH USE and further manufacture only, and can not be administrated to human and animals for use in diagnostic and therapeutic procedures.**

**Manufactured by ANOGEN - A Division of YES Biotech Laboratories Limited**

S7.5(01)



**ANOGEN** - A Division of YES Biotech Laboratories Ltd.

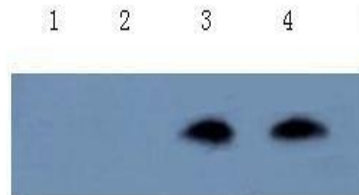
2355 Derry Road East, Unit 23, Mississauga, ON L5S 1V6 • Tel: (905) 677-9221 • Fax: (905) 677-0023

Dot blot- beta Amyloid 1-42 antibody (10C11)



Detection of Abeta 40 and Abeta 42 on 10 ng of peptide per lane using 10C11 at 1:1000 dilution

Western blot-beta amyloid 1-42 antibody (10C11)



1 & 2: Abeta40 peptide, 3 & 4: Abeta42 peptide

Detect Abeta40 peptide and Abeta42 peptide using antibody 10C11 at 1:500 dilution

**This product is for LABORATORY RESEARCH USE and further manufacture only, and can not be administrated to human and animals for use in diagnostic and therapeutic procedures.**

**Manufactured by ANOGEN - A Division of YES Biotech Laboratories Limited**

S7.5(01)